



Architecture / Planning / Interior Design  
Portland Seattle Los Angeles Washington DC New York  
925 Fourth Ave., Suite 2400  
Seattle, Washington 98104  
PH: 206 623 9494  
FAX: 206 623 7868

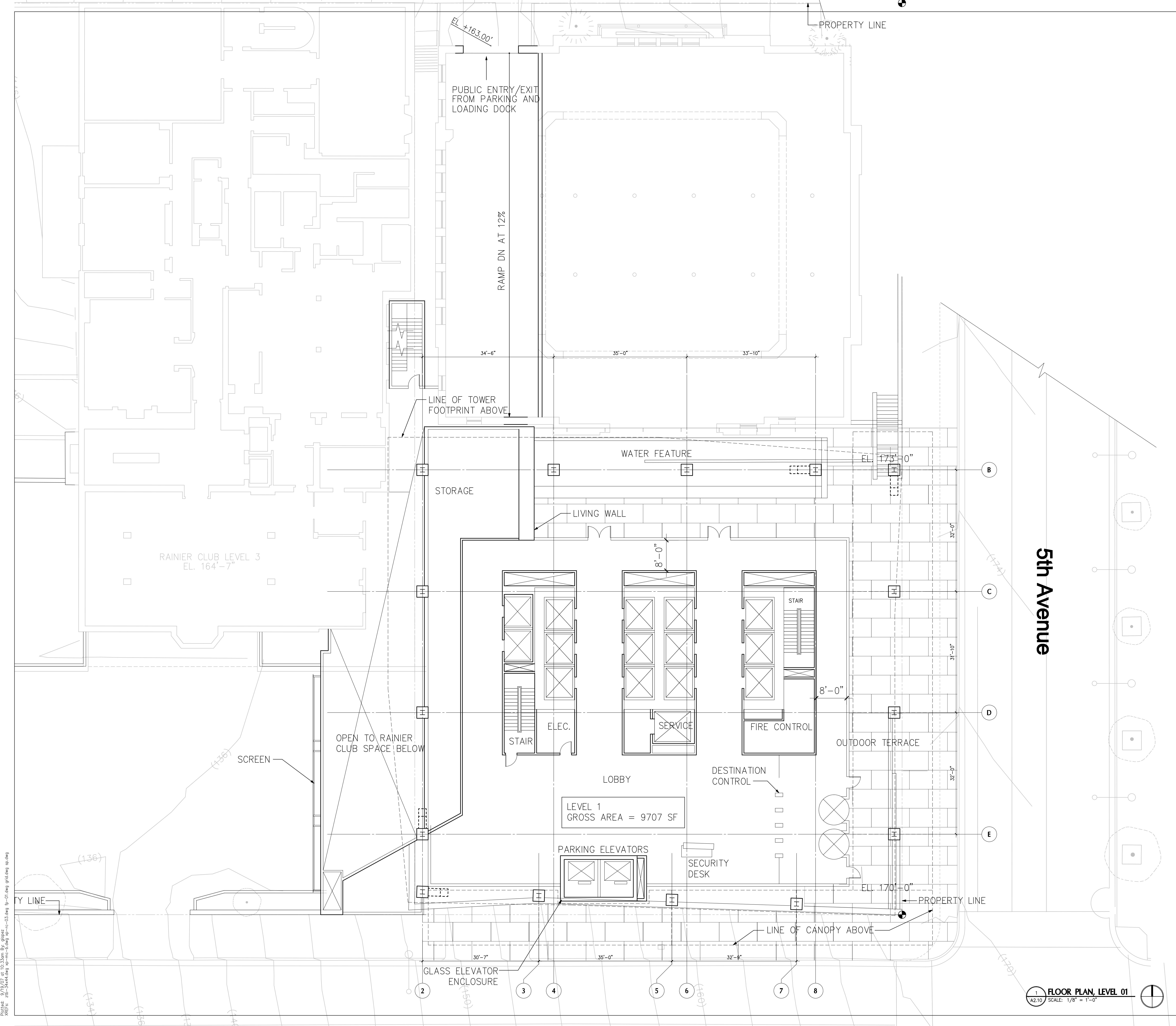
Consultants

**STRUCTURAL ENGINEER**  
ARUP  
901 MARKET STREET, SUITE 260  
SAN FRANCISCO, CA 94103

**MECHANICAL ENGINEER**  
SYSKA HENNESSY GROUP  
1500 W OLYMPIC BLVD, SUITE 680  
LOS ANGELES, CA 90064

**ELECTRICAL ENGINEER**  
SYSKA HENNESSY GROUP  
1500 W OLYMPIC BLVD, SUITE 680  
LOS ANGELES, CA 90064

**CIVIL ENGINEER**  
COUGHLIN PORTER LUNDEEN  
413 PINE STREET, SUITE 300  
SEATTLE, WA 98101



Revisions


**5th + COLUMBIA TOWER**

SEATTLE, WASHINGTON 98104

Drawing Title  
**FLOOR PLAN, LEVEL 01 (CLUB LEVEL 3/ CHURCH BASEMENT)**

Date: SEPTEMBER 19, 2007  
Job No: S 2458.01  
Drawn By: TEAM  
Checked By: ZGF

Drawing No.  
**A2.10**  
OWNER REVIEW

File: Z:\SEA\Projects\14258.01\Coord\Sheets\A2-10.dwg  
PLOT: at: 2/24/08 10:10:11 AM  
User: bryant

**FLOOR PLAN, LEVEL 01**  
SCALE: 1/8" = 1'-0"