

5th and Columbia Construction Update

May 2015

Major Activities

Shoring & Excavation: Shoring and tiebacks are nearing completion. Night haul trucking will continue as it reduces the impacts to the public and the environment. Tiebacks are scheduled for completion along with excavation in late April/ early May 2015.

Public Impacts

5th Avenue: For safety, the west sidewalk between Columbia Street and Marion Street will remain closed to pedestrians throughout the duration of the project. The west side traffic lane will be closed for construction Monday – Friday, between 6 p.m. and 3 p.m. and on Saturdays (9 a.m. to 6 p.m.) as required.

Columbia St: The north sidewalk between 5th Avenue and 4th Avenue will remain closed throughout the duration of the project as this is an active truck haul route and will serve as the location for a construction elevator and other primary building functions.

Mobilizations/ Street Closures: A second conveyor was mobilized on April 11th. Tower crane erection is scheduled for May 16th, 30th, and the 31st. The mat foundation pour is scheduled for June 20th. All of these activities will require major street closures. Individual traffic control and logistics plans will be sent out as the dates of these activities near.

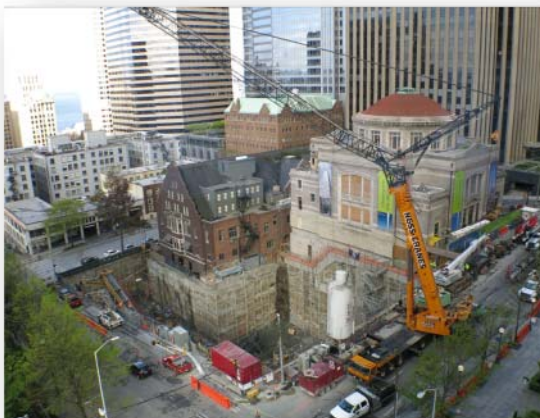


Construction Milestones

April-May 2015: Complete Excavation and Erect Tower Crane

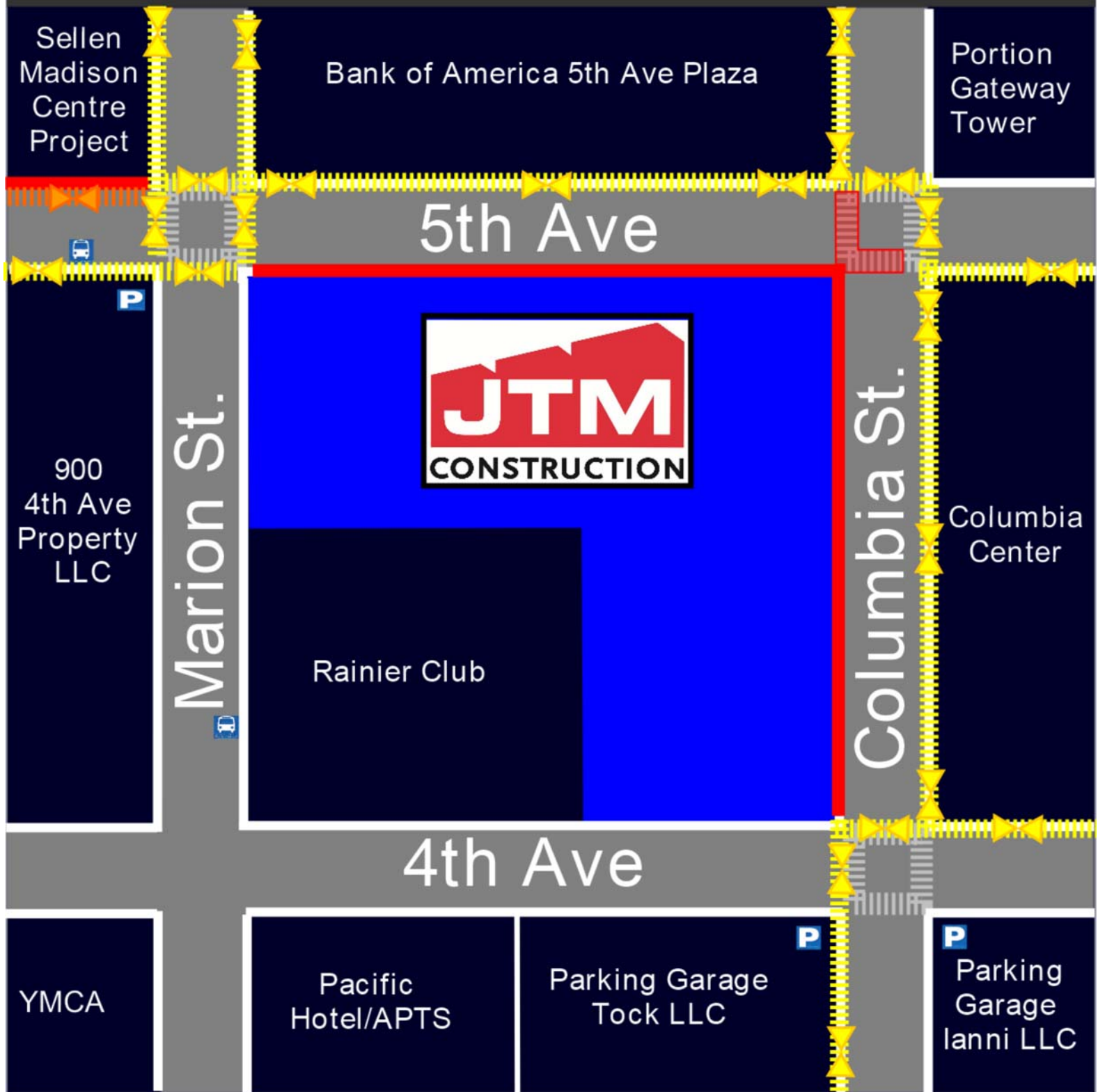
May – August 2015: Construct Building Foundations and Parking Garage Structure



August 2015 – March 2017: Construct Steel Office Tower Structure, Exterior Enclosures and Building Systems



Visit 5thandcolumbia.com for more information

LOCAL PEDESTRIAN ACCESS DURING CONSTRUCTION



-  Pedestrian Access
-  Pedestrian Access 3PM to 6PM
-  Closed Sidewalk/Construction
-  Open sidewalk
-  Bus Stop
-  Parking Garage/Lot

FIFTH +
COLUMBIA

